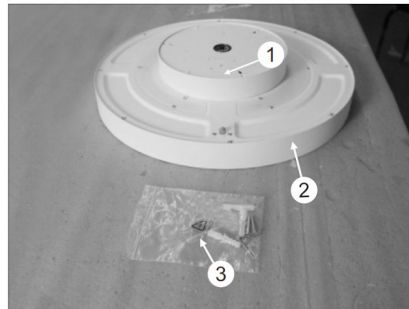
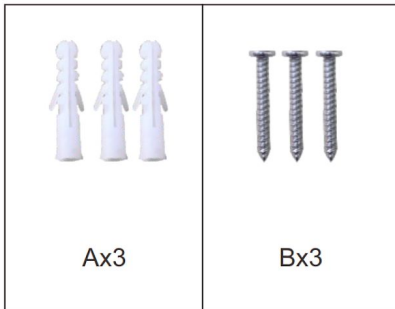
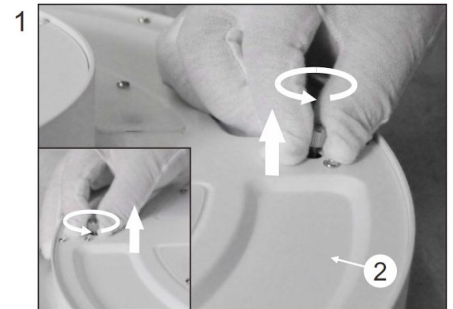


# zwena

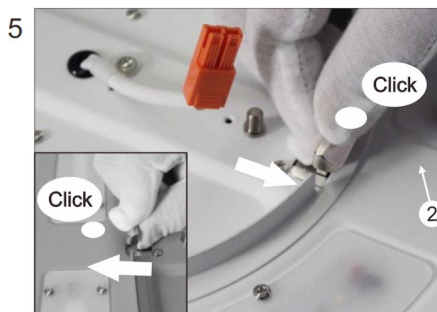
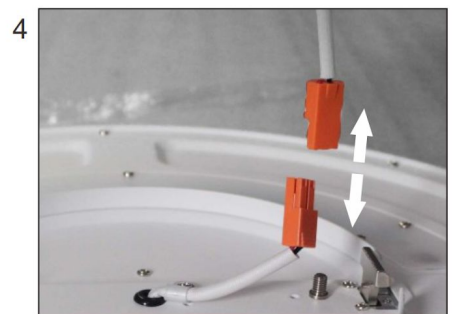
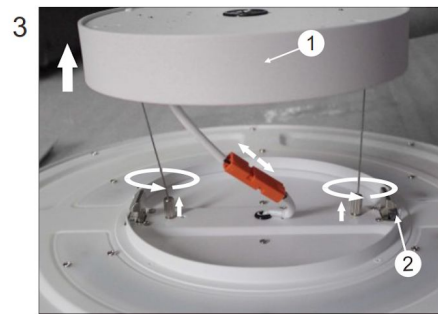
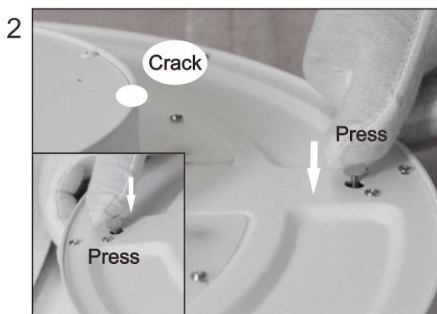
Montageanleitung Decken- und Pendelleuchten  
*Instructions de montage plafonniers et suspensions*



1) Montagesockel / socle de montage  
 2) Leuchtgehäuse / boîtier de luminaire  
 3) Zubehör-Beutel / sacs à accessoires



Schraube lösen  
*Desserrer la vis*



Schraube anziehen  
*serrer la vis*

